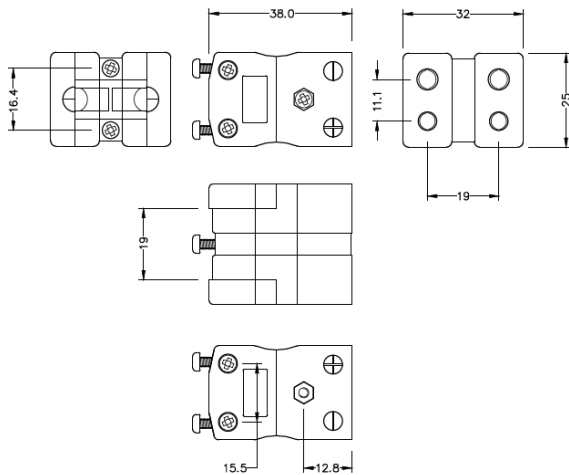


Standard-Thermoelement-Steckverbinder Duplex-Steckdose AS-E-FD Typ E ANSI



Standard Duplex in-line Socket
(dimensions in mm)



Labfacility are the UK's leading manufacturer of Temperature Sensors, Thermocouple Connectors and associated Temperature Instrumentation and stockings of Thermocouple Cables. The Company has been trading since 1971 and is ISO9001 accredited.

Standard-Thermoelement-Steckverbinder Duplex-Steckdose AS-E-FD Typ E ANSI

Robuste, mit Glas gefüllte Polyesterkörper. Die Kontakte sind polarisiert, um eine falsche Verbindung zu verhindern

Technische Daten**Specifications**

Product Code	XE-9127-001
General Description	Rugged glass filled polyester bodies, suitable for industrial applications.
Thermocouple Type	E ANSI
Connector Type	Duplex Socket
Connector Size	Standard
Colour	Violet
Dimensions	See Schematic Drawing (Product Literature Tab)
Max. Temperature	220°C
+Positive Contact	Nickel Chromium
-Negative Contact	Copper Nickel
Standards Met	BS EN 50212:1997. RoHS