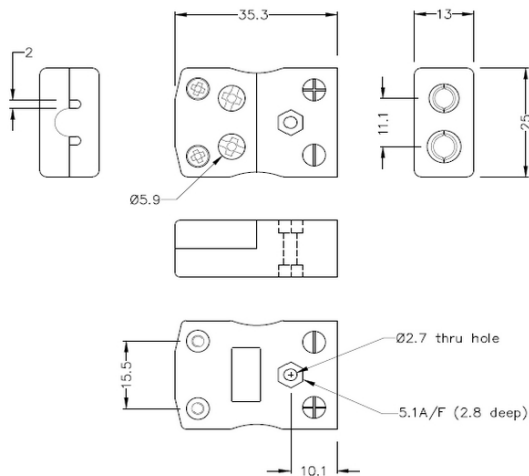


Standard-Schnelldraht-Thermoelement-Steckverbinder in der IS-E-FQ Typ E IEC



Standard in-line Socket - Quick Wire
(dimensions in mm)



Labfacility are the UK's leading manufacturer of Temperature Sensors, Thermocouple Connectors and associated Temperature Instrumentation and stockings of Thermocouple Cables. The Company has been trading since 1971 and is ISO9001 accredited.

Standard-Schnelldraht-Thermoelement-Steckverbinder IS-E-FQ Typ E IEC

Eine einfache 'Jab-in'-Verbindung für eine schnelle Terminierung, einfach das Kabel einschieben und die Schraube festziehen. Die Kontakte sind polarisiert, um eine falsche Verbindung zu verhindern

Technische Daten**Specifications**

Product Code	XE-1642-001
General Description	Easy 'jab-in' connection for rapid termination, contacts are polarised to prevent incorrect connection.
Thermocouple Type	E IEC
Connector Type	Quick Wire Socket
Connector Size	Standard
Colour	Violet
Max. Temperature	220°C
+Positive Contact	Nickel Chromium
-Negative Contact	Copper Nickel
Standards Met	BS EN 50212:1997. RoHS