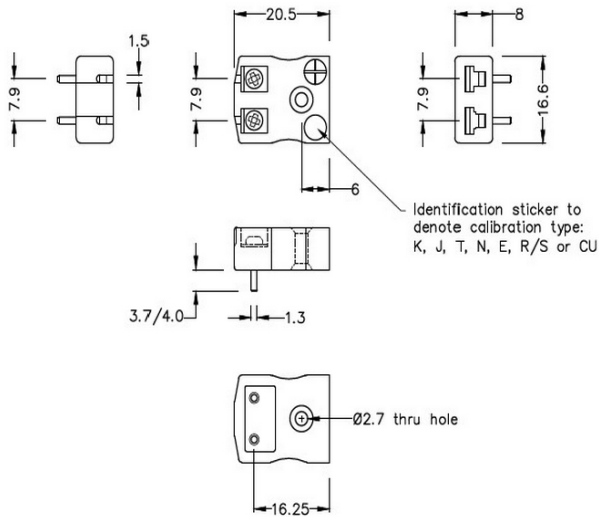


# PCB-Montage-Thermoelement-Steckdose IM-K-PCB Typ K IEC mit verzinnten Pins



**Miniature PCB Socket**  
(dimensions in mm)



Labfacility are the UK's leading manufacturer of Temperature Sensors, Thermocouple Connectors and associated Temperature Instrumentation and stockings of Thermocouple Cables. The Company has been trading since 1971 and is ISO9001 accredited.

**PCB-Montage-Thermoelement-Steckdose IM-K-PCB Typ K IEC mit verzinten Pins**

Speziell fr Leiterplatten entwickelt, massive, verzinnte Pins fr direkte Platinenmontage und Bereitstellung fr CJC-Sensoren

**Technische Daten****Specifications**

<b>Product Code</b>	XE-1109-TIN
<b>General Description</b>	Versatile, high quality circuit board mounting miniature socket
<b>Thermocouple Type</b>	K IEC
<b>Connector Type</b>	PCB Socket
<b>Connector Size</b>	Miniature
<b>Colour</b>	Green
<b>Max. Temperature</b>	220°C
<b>Pins</b>	Tin Plated
<b>+Positive Contact</b>	Nickel Chromium
<b>-Negative Contact</b>	Nickel Alloy
<b>Standards Met</b>	BS EN 50212:1997. RoHS