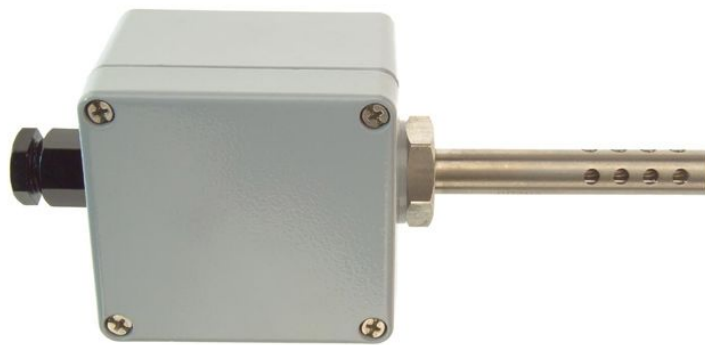


Pt100 Temperatursensoren fr den Auenbereich / Khlhaus - Typ PRT - Einzelelement



Labfacility are the UK's leading manufacturer of Temperature Sensors, Thermocouple Connectors and associated Temperature Instrumentation and stockings of Thermocouple Cables. The Company has been trading since 1971 and is ISO9001 accredited.

Einzelnes 4-adriges Element, das den Anschluss an jedes Pt100 2-, 3- oder 4-Draht-Instrument ermöglicht.

Pt100 (100 Ohm @ 0C) nach IEC 751, Klasse B, 4-Draht-Einzelement

Leistungsbeschreibung

Specifications

Product Code	XE-3673-001
General Description	Weatherproof IP67 rated wall mounting Pt100 for accurate outdoor air temperature sensing
Sensor Type	single element, Pt100 (100 Ohms @ 0°C) to IEC 751, Class B
Housing	Painted Die-Cast Aluminium Housing L80 x W74 x H54mm
Element	Pt100, class B to IEC 751
Sheath Material	Perforated 316 stainless steel probe, 12.7mm x 75mm
Gland	M20 cable entry gland
Max. Temperature	150°C
Min. Temperature	-50°C
IP Rating	IP67
Transmitter	Optional transmitter device has an ambient operating range of -40 to +85°C
Number of Wires	4
Series	Outdoor / Cold Store Pt100